

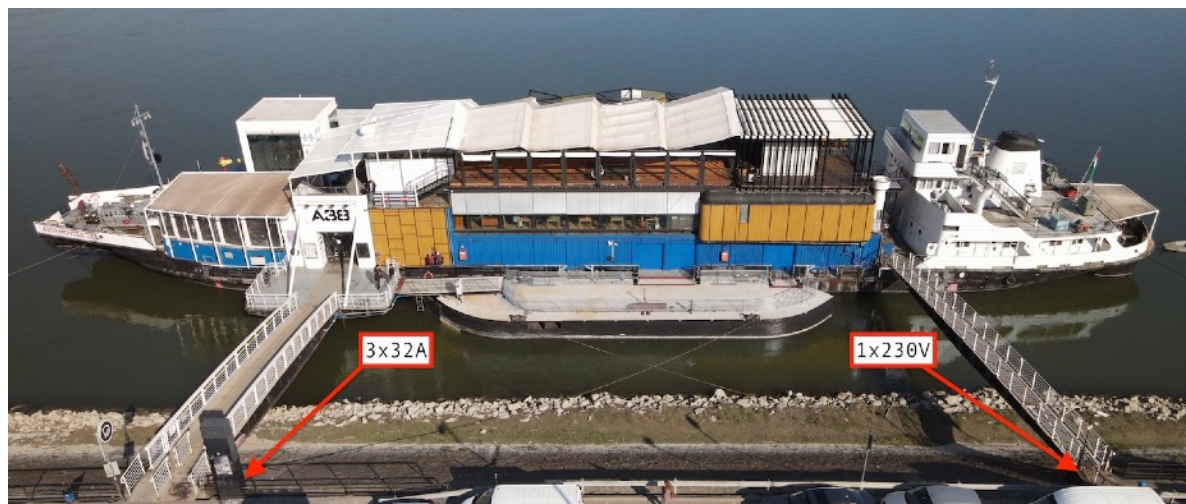


## A38 CONCERT HALL GENERAL INFORMATION 2022

LOCATION	A38 Ship - Budapest
ADDRESS	Henryk Slawik lower quay (Petőfi Bridge Buda side) H-1117 Budapest <a href="https://goo.gl/maps/D6ucj6RkCjxkJ3mbA">https://goo.gl/maps/D6ucj6RkCjxkJ3mbA</a>
FAX	0036 1 464 39 45
WEBSITE	<a href="http://www.a38.hu">http://www.a38.hu</a>
E-MAIL	<a href="mailto:info@www.a38.hu">info at a38.hu</a>
TECHNICAL INFOS	<a href="https://www.a38.hu/en/stagecraft">https://www.a38.hu/en/stagecraft</a>
PROHIBITED	<b>Use of pyrotechnics, confetti, silly strings of any kind.</b>
SMOKING	Please note that according to law no. XLII/1999. in Hungary it is only allowed to smoke in clubs, pubs, restaurants and venues in the assigned areas and nowhere else.
TIME SCHEDULE	Time schedule will be sent by our production department. Please read and confirm. Due to legal aspects concerning the A38 staff working hours the agreed time schedule is not to be exceeded. Changes in get-in times and number of local crew cannot be accepted after one week prior to show because of finalizing planning schedules in due time. Please also consider that the crew cannot enter the stage area until our technicians arrive and that all the load-in and load-out movements are going through our main bridge.



LOCAL CREW	1x stage manager, 1x FOH engineer, 1x Light engineer. Stagehands and Monitor Engineer are not part of our general crew, if your act requires any of them please contact us!
SECURITY	Standard security / NO BARRIER
DRESSING ROOM	2 dressing rooms with shower and toilet
WI-FI	Our wi-fi is password free
MERCHANDISE	We can provide a merchandise desk, please contact us!
CATERING	A38 has it's own first class restaurant, we can provide hot meals and drinks there if agreed in advance. For artists we serve drinks and snack in a dedicated backstage bar.
PARKING	Parking space is 45 meters in front of the venue. Tourbus-power connection 3x400V/32A CEE and 1x230V/16A



STAGE	11,6 x 5,8 x 0,9 m (38 x 19 x 2,9 ft) Clearance: 2,5 m (8,2 ft)
CONCERT HALL	Including stage: 11,6 x 25,8 x 4 m (38 x 84,6 x 13,12 ft).
BACK DROP	Black curtain along the whole width of the stage. If an Artist brings their own backdrop, a fire safety certificate must be sent in advance a week prior to show to the production department, otherwise, the backdrop can not be used.
TECHNICAL CONTACTS:	
	Barnabás <a href="mailto:barnabas@a38.hu">barnabas at a38.hu</a>
	Tamás Vörös <a href="mailto:voros.tamas-at-a38.hu">voros.tamas-at-a38.hu</a>

OTHER COLLEAGUES (management, etc): <https://www.a38.hu/en/colleagues>

## GENERAL INFORMATION ABOUT HUNGARY

TIME Hungary is in the GMT +1:00 time zone

ELECTRICITY The main power (AC) in Hungary is 230V and 50Hz.

### TELEPHONE, INTERNET

- Country code of Hungary is +36
- International calls from Hungary can be initiated with 00 + country code + phone number - Landline calls can be initiated with 06 + number of the region (mobiles are 20/30/70) + phone number
- Hungarian domains mostly end with .hu

CURRENCY The Hungarian currency is Forint (HUF)

### EMERGENCY LINE

Emergency number is 112, available non-stop from any phone for free.

### BORDER CROSSING

Hungary is in the Schengen area, most citizens are able to visit without visa. More information: <http://www.police.hu/en>

### ROAD TAX CATEGORIES

D1 motorbike and car maximum 3.5 tons  
D2 3.5 tons – 7.5 tons vehicles  
D3 7.5 tons – 12,0 tons vehicles  
Prices and more information: <http://toll-charge.hu>